

# Health Care Facilities

## VICTORY GARDENS BORO

## MORRIS

### Legend

Counties

VICTORY GARDENS BORO

Hospitals

Nursing Homes

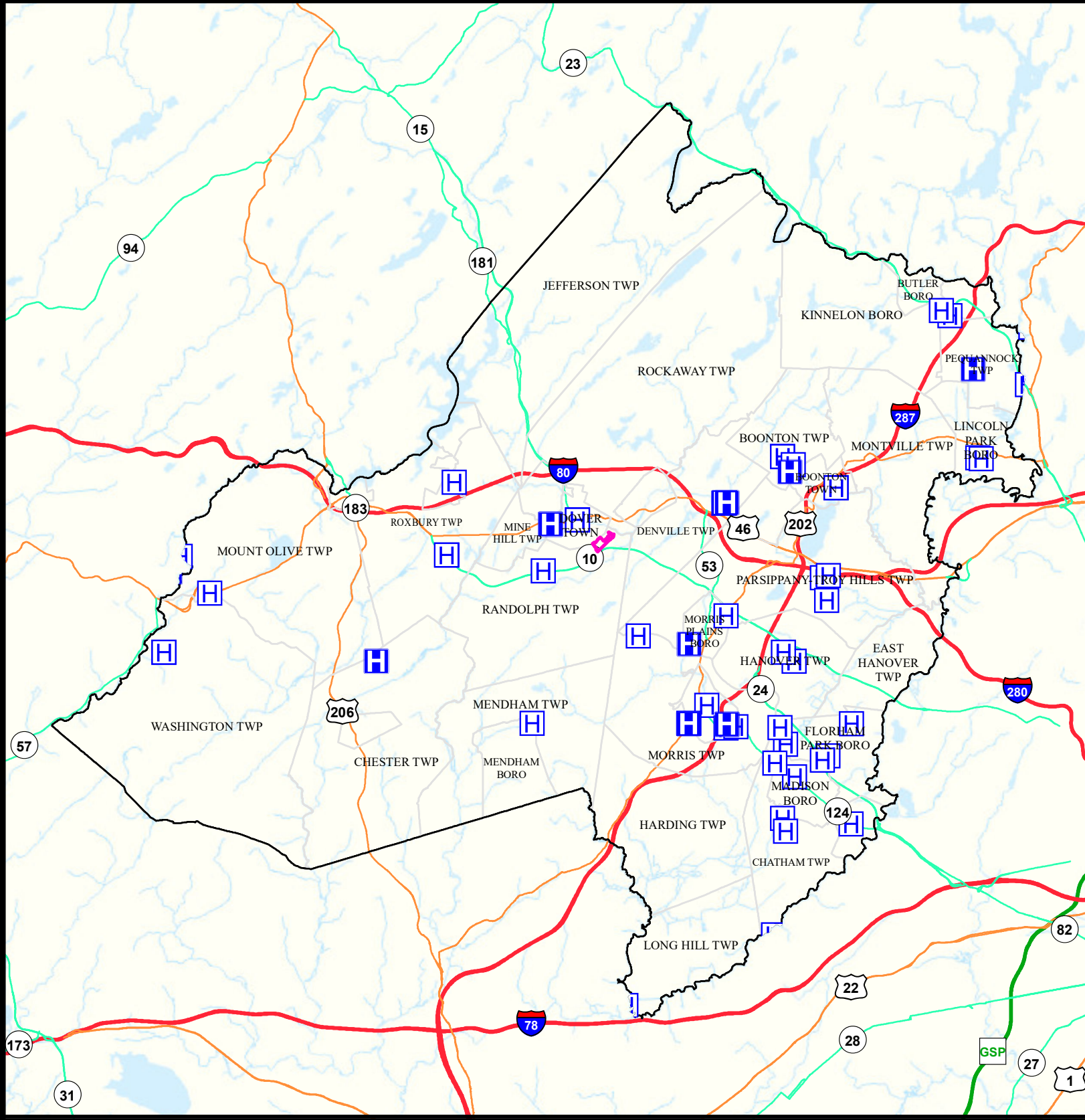
Municipalities



Date: 9/26/2022

0 2 4

Miles



# Air Cancer Risk

## VICTORY GARDENS BORO

## MORRIS

### Legend

Counties

VICTORY GARDENS BORO

### Risk per Million

61 - 87

88 - 108

109 - 127

128 - 145

146 - 167

168 - 193

194 - 243

244 - 283

284 - 351

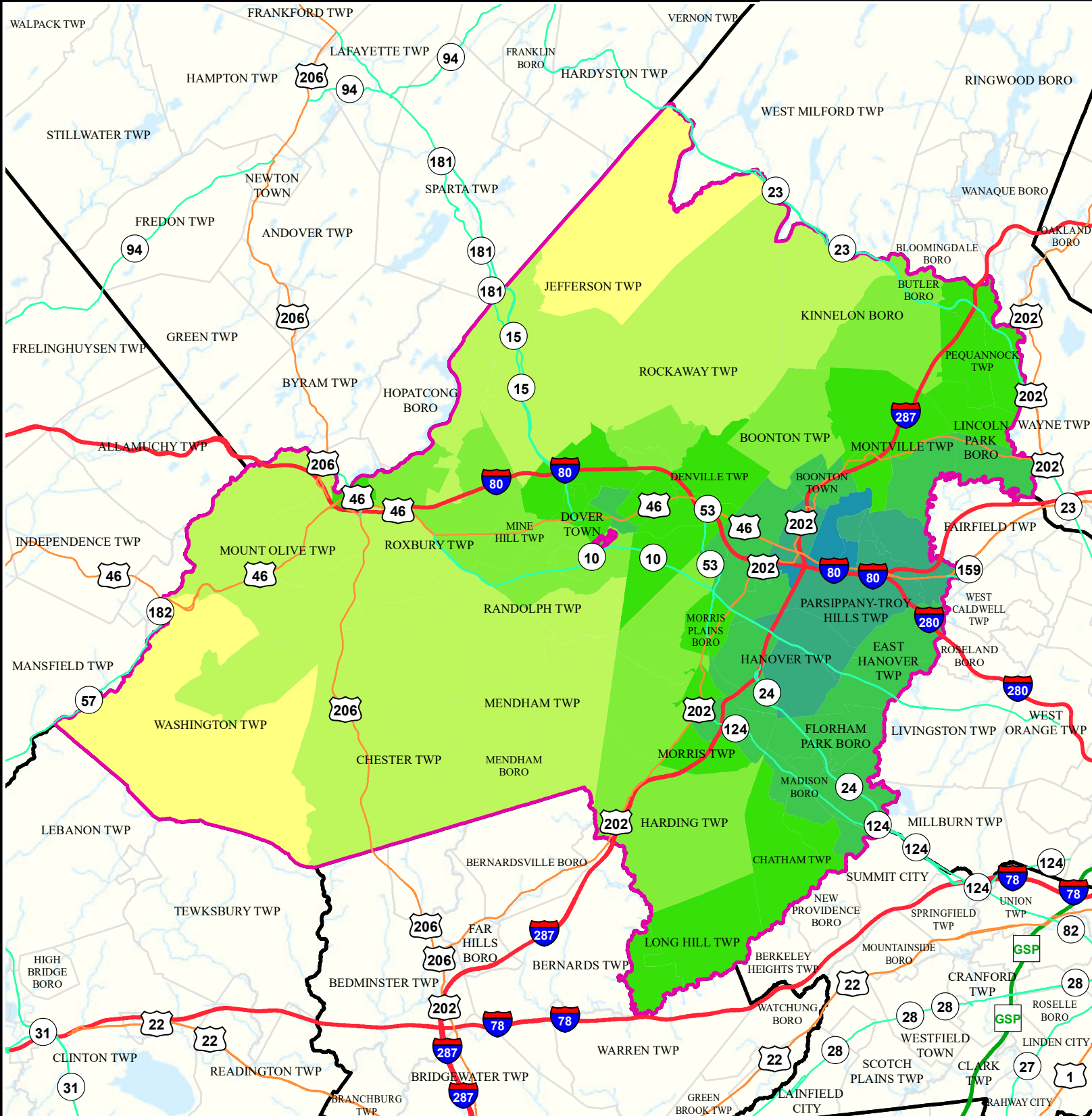
352 - 604



Date: 9/26/2022

0 2 4

Miles



# Air Non Cancer

## VICTORY GARDENS BORO

## MORRIS

### Legend

Counties

VICTORY GARDENS BORO

Combined Hazard Index

0.75 - 1.00

1.01 - 2.00

2.01 - 3.00

3.01 - 4.00

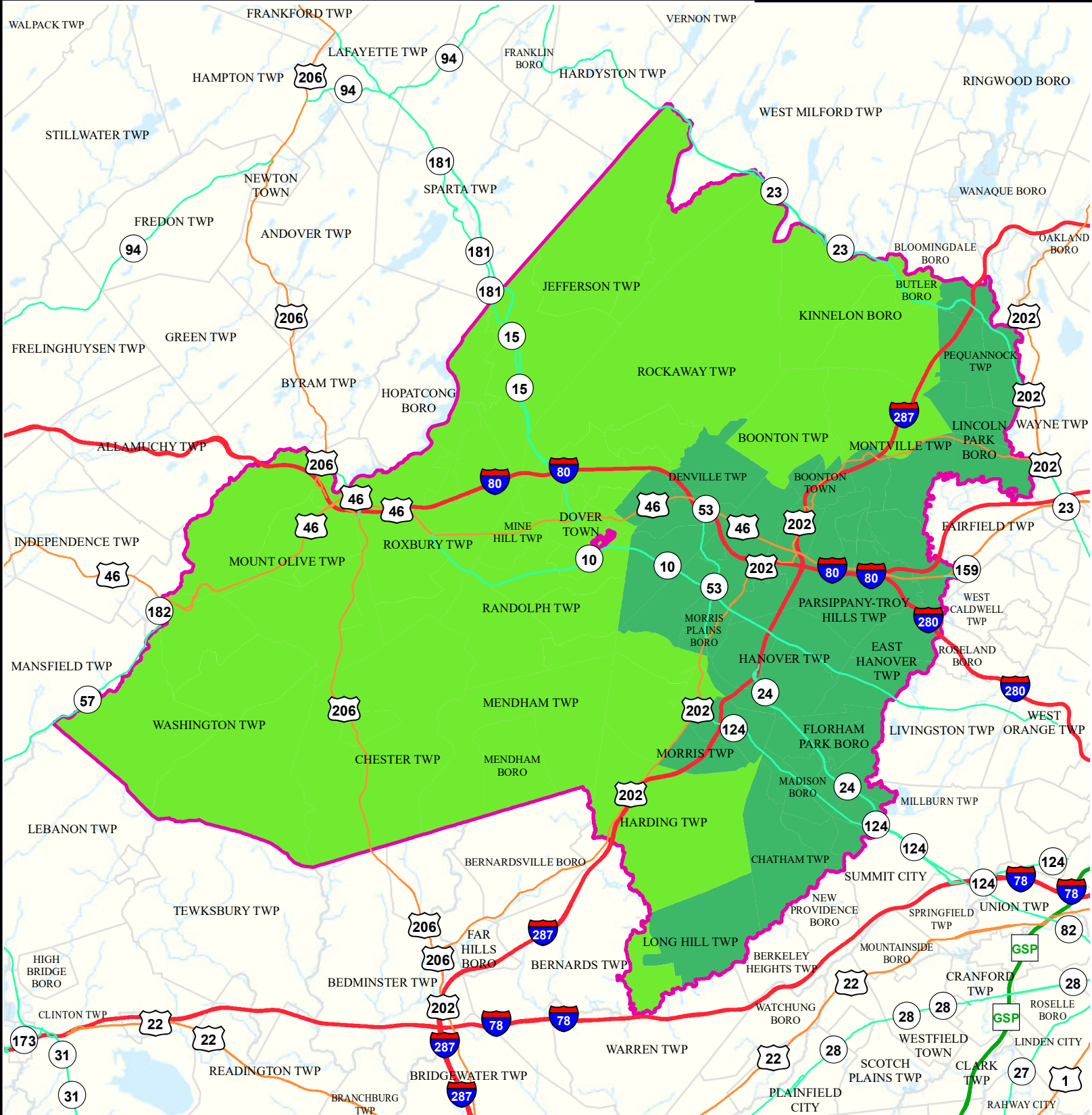
4.01 - 8.09



Date: 9/26/2022

0 2 4

Miles




# Air Quality Index (AQI)

VICTORY GARDENS BORO

MORRIS

## Legend

 Municipalities

 VICTORY GARDENS BORO

## Average AQI Days

 0 - 1

 3.5 - 6.5

 1.5 - 3

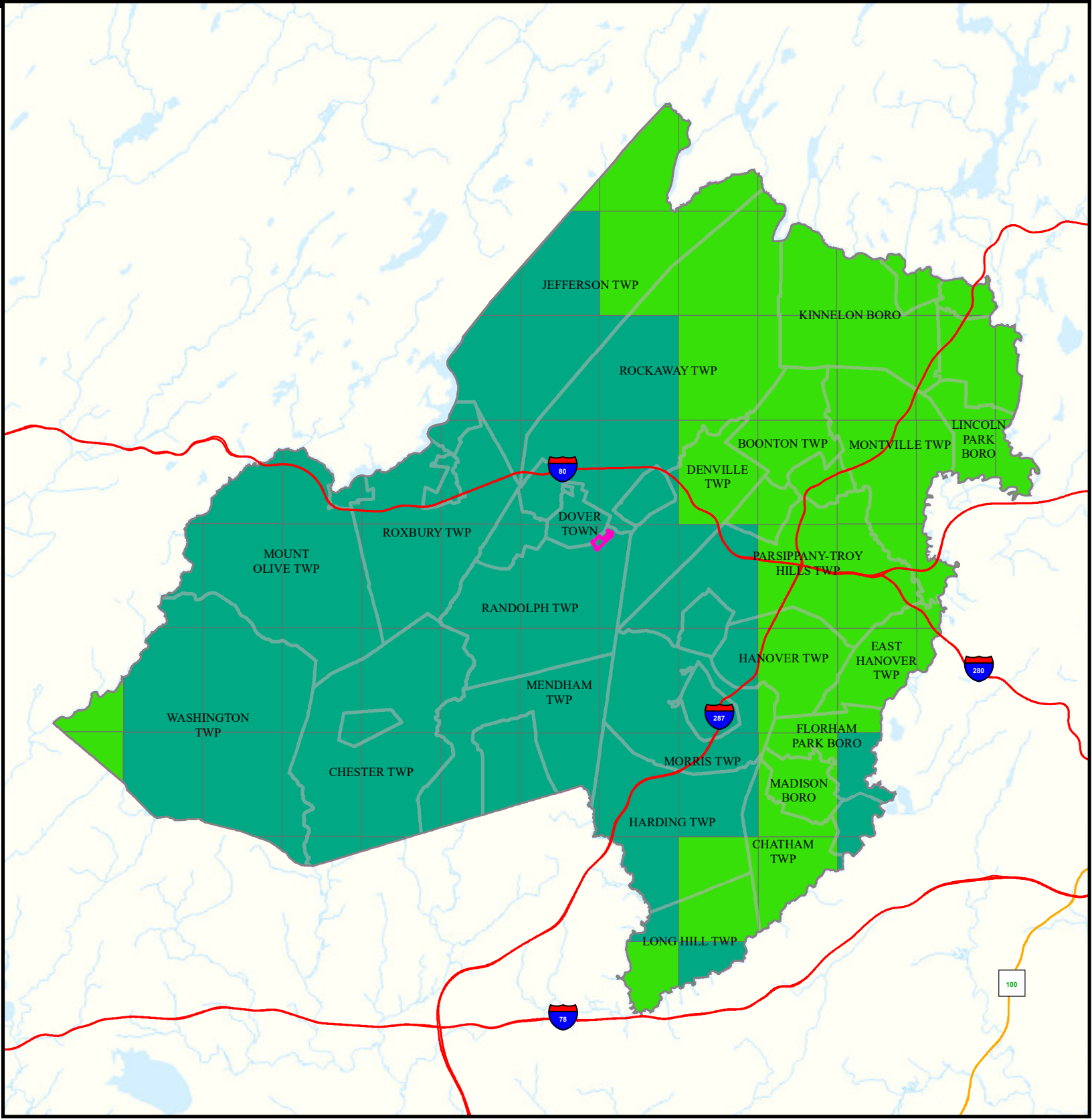
 7 - 12

Air Quality Index (AQI)  
Days above 100 (3 yr Avg)  
2018 to 2020



0 2 4 Miles

Date: 4/18/2022



# Community Drinking Water

## VICTORY GARDENS BORO

## MORRIS

### Legend

- Counties
- VICTORY GARDENS BORO
- Municipalities

MCL and TT Violations and AL Exceedances	
	0
	1 - 5
	6 - 10
	11 - 15
	16 - 30

N

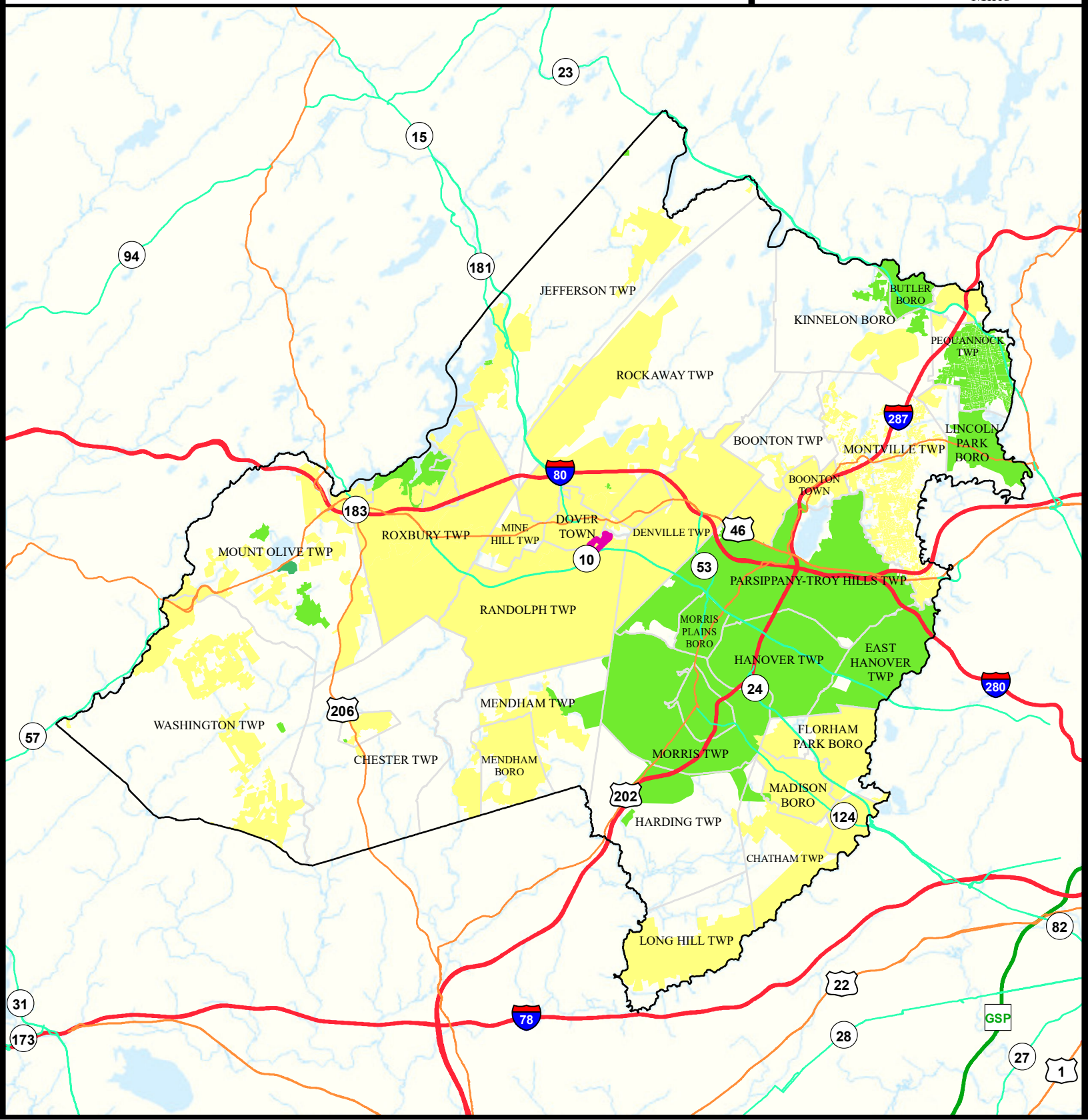


Date: 9/27/2022

0    2    4



Miles



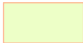


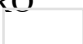


# Restricted Groundwater & Soil Use

VICTORY GARDENS BORO

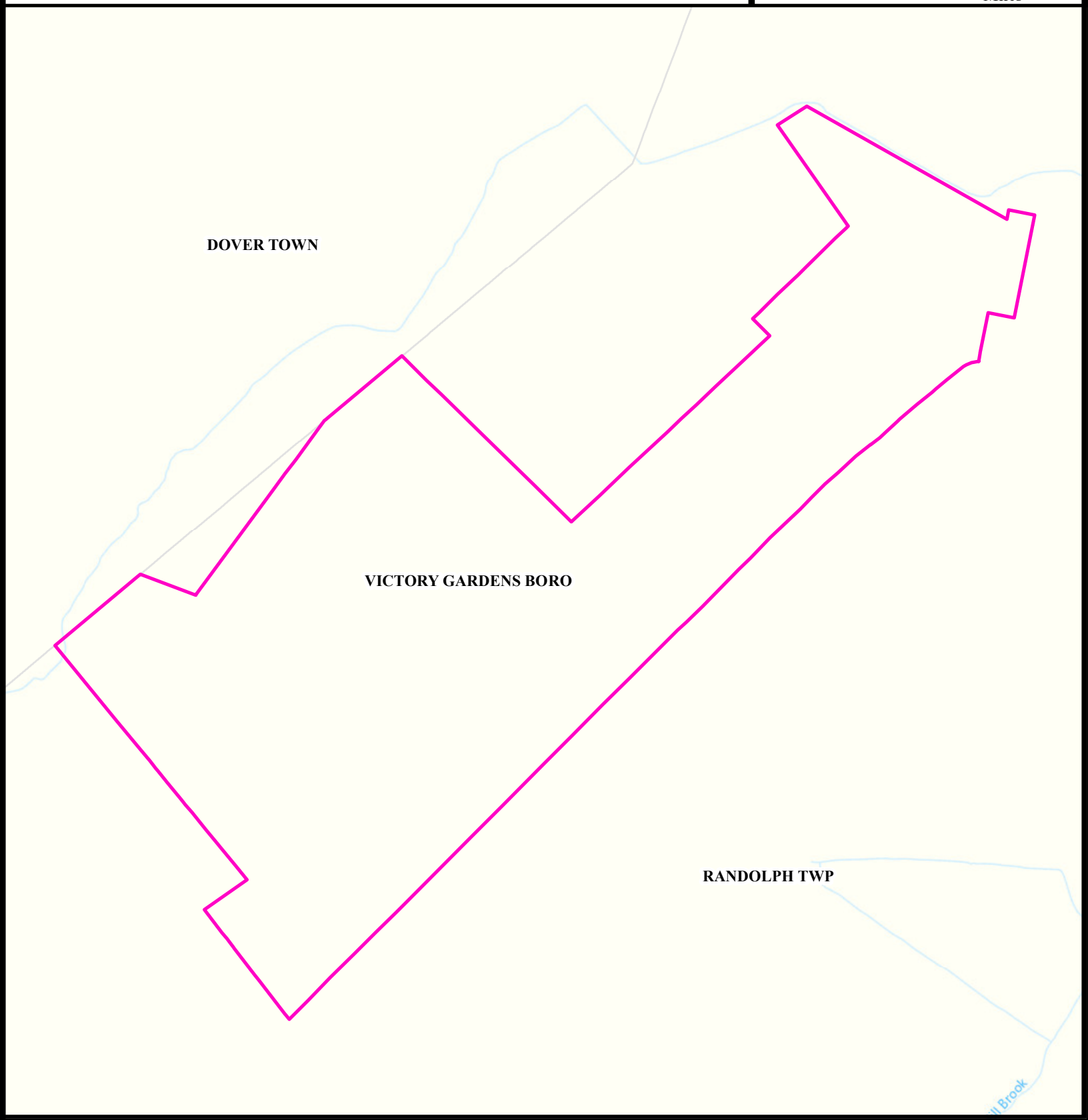
MORRIS

## Legend

-  Counties
-  VICTORY GARDENS BORO
-  Deed Notice Areas
-  Groundwater Contamination Areas (CKE)
-  Groundwater Contamination Areas (CEA)
-  Municipalities



Date: 3/30/2022  
0 0.0375 0.075  
Miles



# Surface Water Quality



**VICTORY GARDENS BORO**

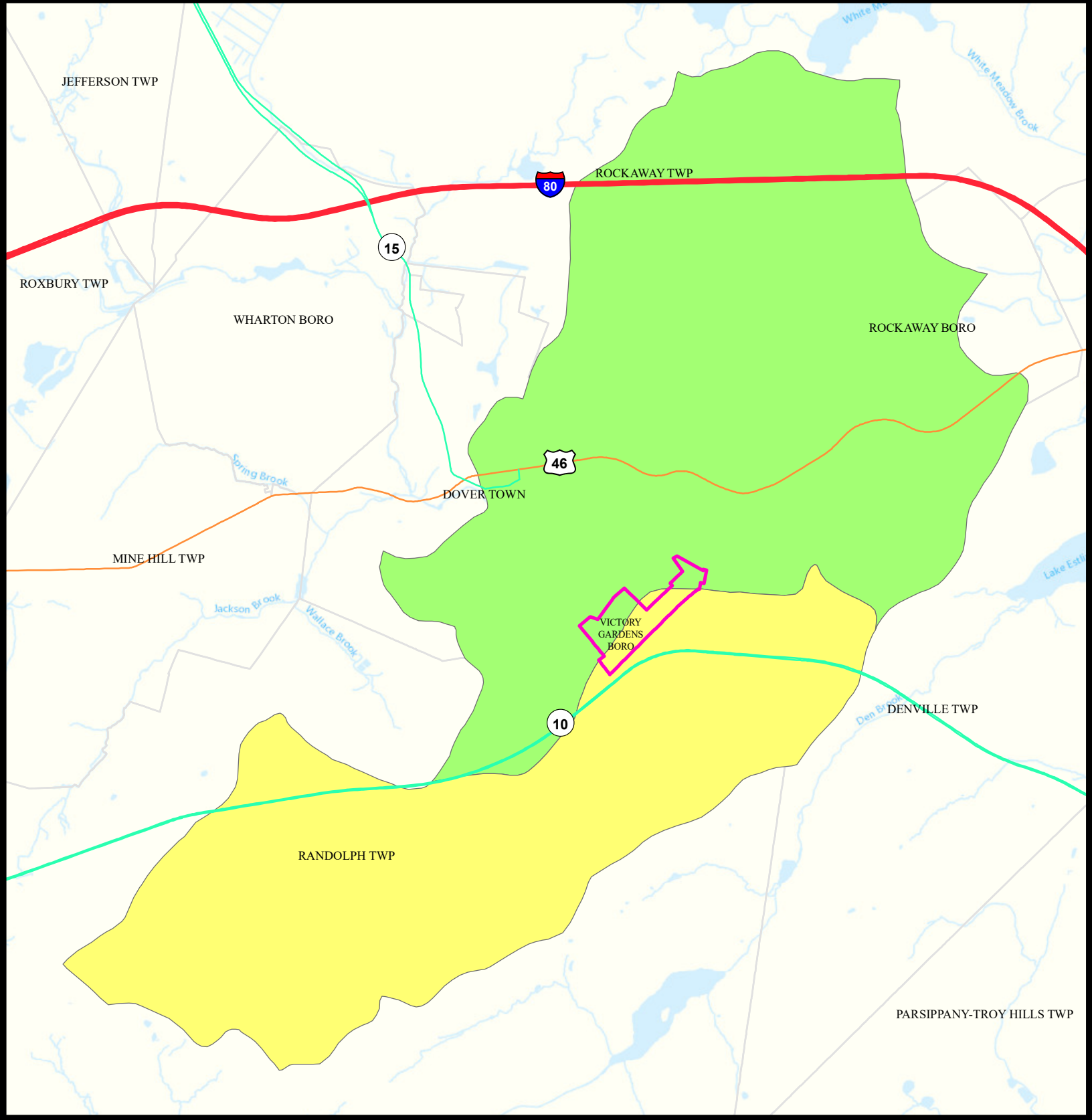
**MORRIS**

## Legend

- Counties
- Municipalities
- VICTORY GARDENS BORO

Impaired (Percent)		
<span style="display: inline-block; width: 20px; height: 10px; background-color: #ffffcc; border: 1px solid black; margin-right: 5px;"></span> 20	<span style="display: inline-block; width: 20px; height: 10px; background-color: #c1e1c1; border: 1px solid black; margin-right: 5px;"></span> 40	<span style="display: inline-block; width: 20px; height: 10px; background-color: #a2c4c9; border: 1px solid black; margin-right: 5px;"></span> 66.
<span style="display: inline-block; width: 20px; height: 10px; background-color: #fff2cc; border: 1px solid black; margin-right: 5px;"></span> 25	<span style="display: inline-block; width: 20px; height: 10px; background-color: #94d08f; border: 1px solid black; margin-right: 5px;"></span> 50	<span style="display: inline-block; width: 20px; height: 10px; background-color: #807dba; border: 1px solid black; margin-right: 5px;"></span> 75
<span style="display: inline-block; width: 20px; height: 10px; background-color: #ffd966; border: 1px solid black; margin-right: 5px;"></span> 33.	<span style="display: inline-block; width: 20px; height: 10px; background-color: #74c476; border: 1px solid black; margin-right: 5px;"></span> 60	<span style="display: inline-block; width: 20px; height: 10px; background-color: #41ab5d; border: 1px solid black; margin-right: 5px;"></span> 80
		<span style="display: inline-block; width: 20px; height: 10px; background-color: #1f77b4; border: 1px solid black; margin-right: 5px;"></span> 100

N  
  
 Date: 9/26/2022  
 0 0.3 0.6  
  
 Miles





## Surface Water Quality

## MORRIS COUNTY Victory Gardens Borough

### What is a Designated Use?

New Jersey's [Surface Water Quality Standards \(SWQS\)](#) establish the designated uses of the State's surface waters, classify surface waters based on those uses, and specify the water quality criteria and other policies necessary to attain those uses. Designated uses include water supply for drinking, agriculture and industrial uses, fish consumption, shellfish resources, propagation of fish and wildlife, and recreation.

The table below show the designated use information for your municipality. For more information on Surface Water Quality, see the Healthy Community Planning Report for this municipality.

AU_name	Aquatic_General	Aquatic_Trout	Water_Supply	Recreation	Shellfish	Fish_Consumption
Rockaway R (BM 534 brdg to 74d 33m 30s)	Attaining	NA	Attaining	Non Attaining	NA	Non Attaining
Mill Brook (Morris Co)	Attaining	Attaining	Attaining	Non Attaining	NA	Insufficient Data



# Flooding (Urban Land Cover)

**VICTORY GARDENS BORO**

**MORRIS**

## Legend

Counties

VICTORY GARDENS BORO

Municipalities

Urban Land

Urban Land Flooded

Toll Road

Interstate

US Highway

State Highway

Impacted Roads

Impacted roads show only county level or higher routes in flooding areas.

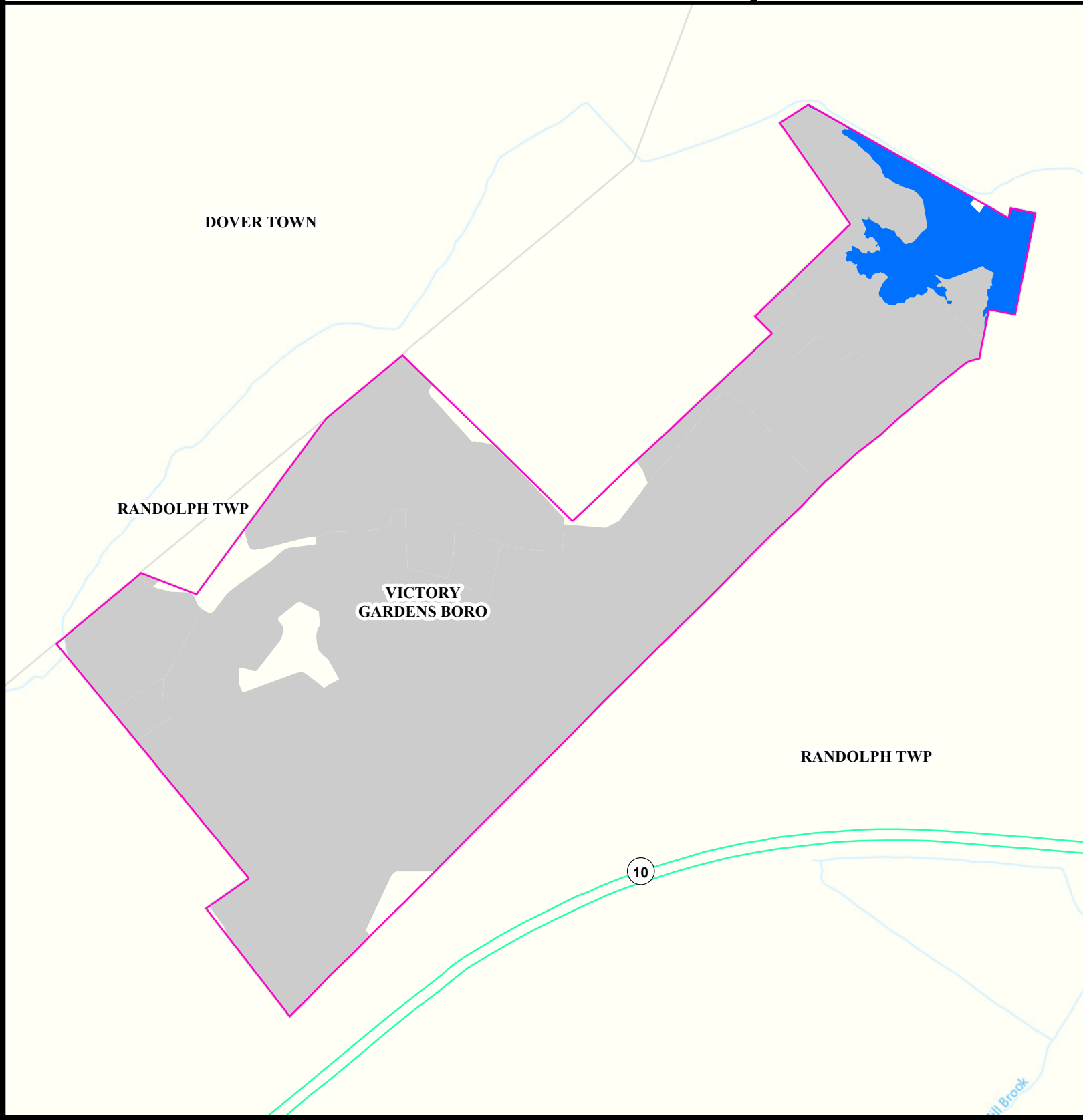


Date: 4/13/2022

0 0.0375 0.075



Miles



# Air Permit Sources

VICTORY GARDENS BORO

MORRIS

## Legend

- Counties
- VICTORY GARDENS BORO

## Facility Type

- Major
- Minor

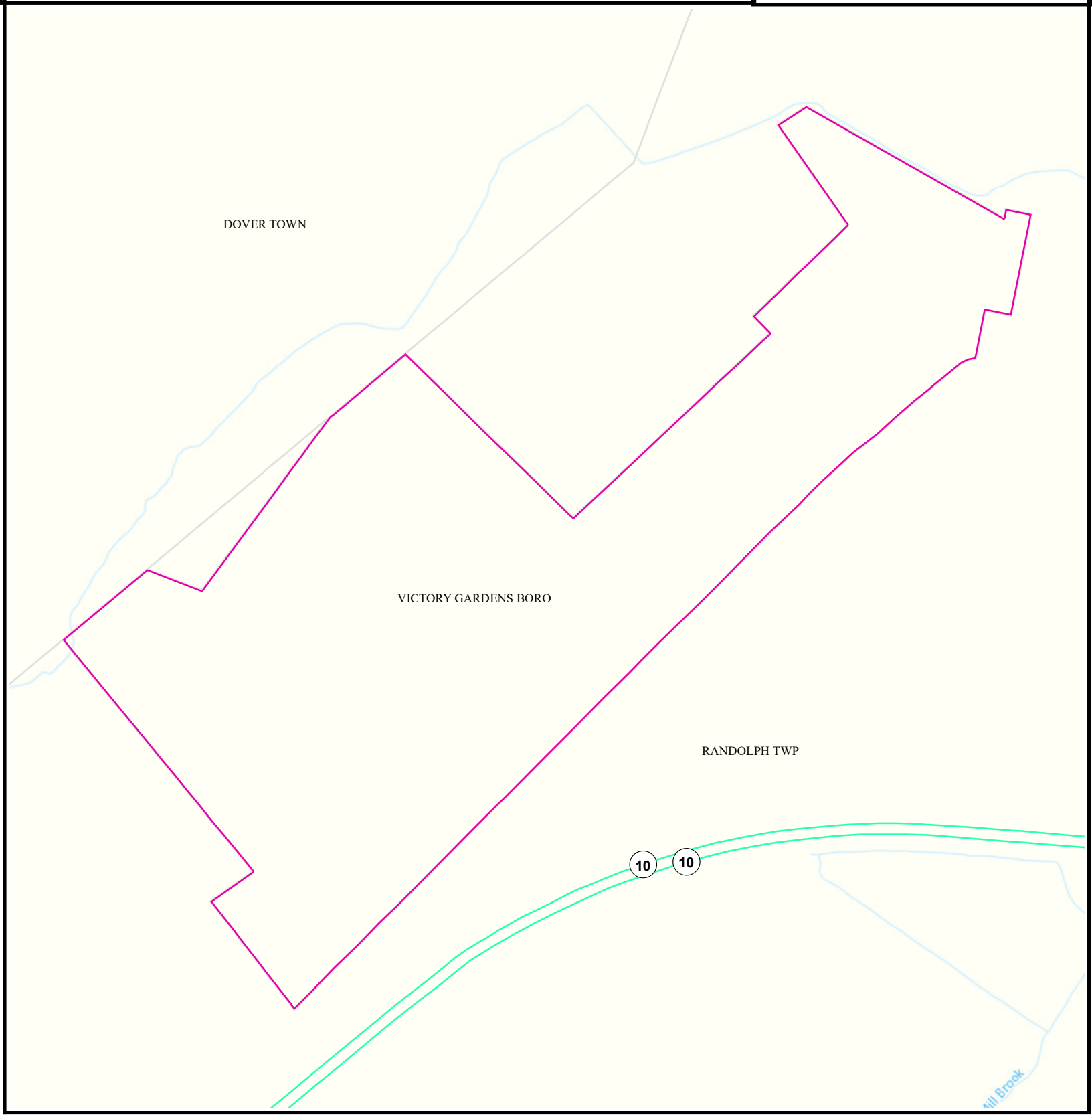


Date: 4/12/2022

0 0.04 0.08



Miles



# Contaminated Sites

**VICTORY GARDENS BORO**

**MORRIS**

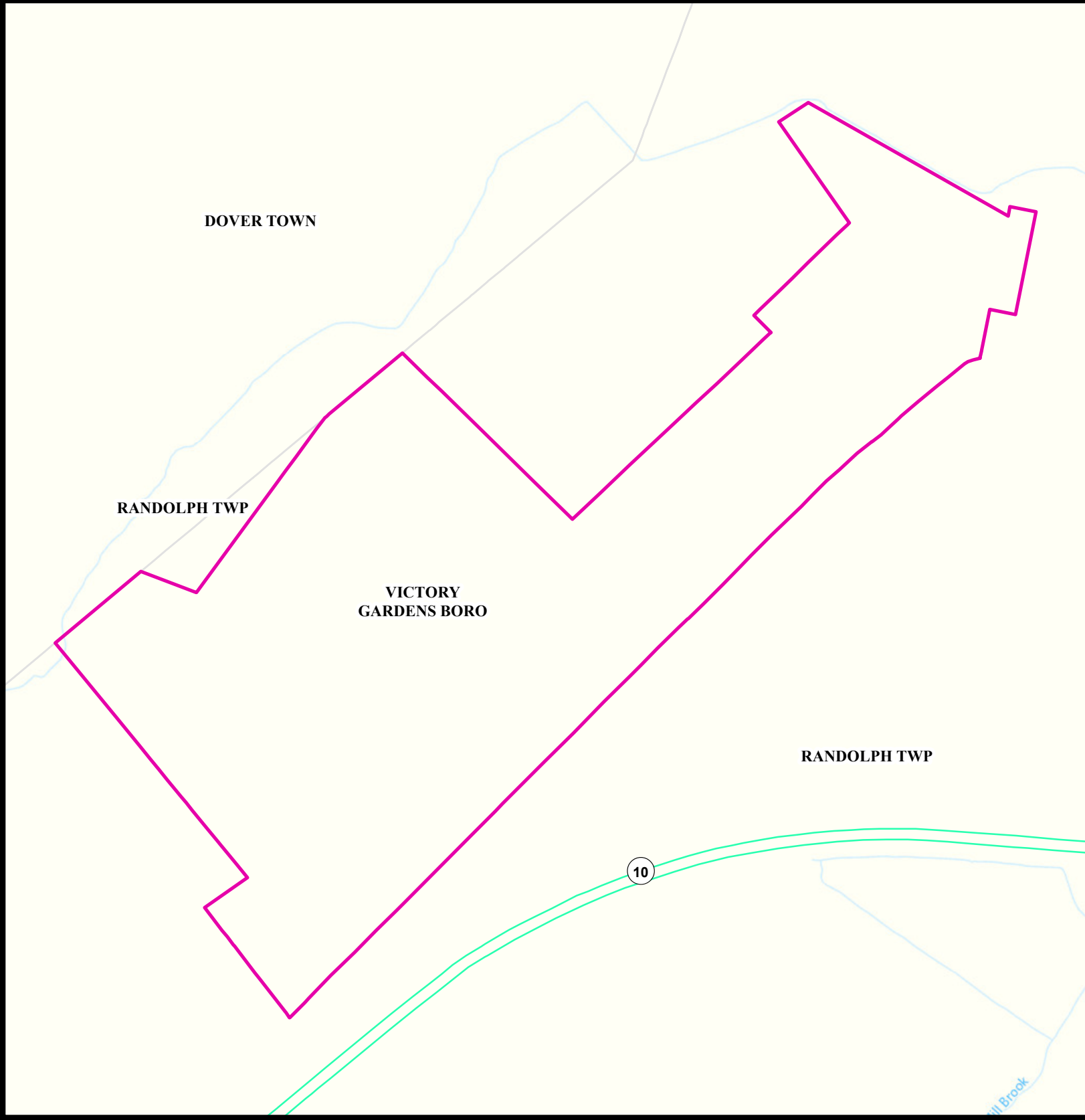
## Legend

- Counties
- VICTORY GARDENS BORO
- Municipalities

- Known Contaminated Sites
- Density Weighting
- 0
  - 1
  - 2
  - 3
  - Other



Date: 5/25/2022  
0 0.0375 0.075  
Miles






# Scrap Metal Facilities




VICTORY GARDENS BORO

MORRIS

## Legend

-  Municipalities
-  VICTORY GARDENS BORO
-  Scrap Metal Facility

## Sites Per Square Mile

- |  |   |
|--|---|
|  0 - 0.29   |  2.3 - 4.4 |
|  0.30 - 1.1 |  4.5 - 8.3 |
|  1.2 - 2.2  |   |

Scrap Metal Processing  
Sites per Sq Mile  
2022

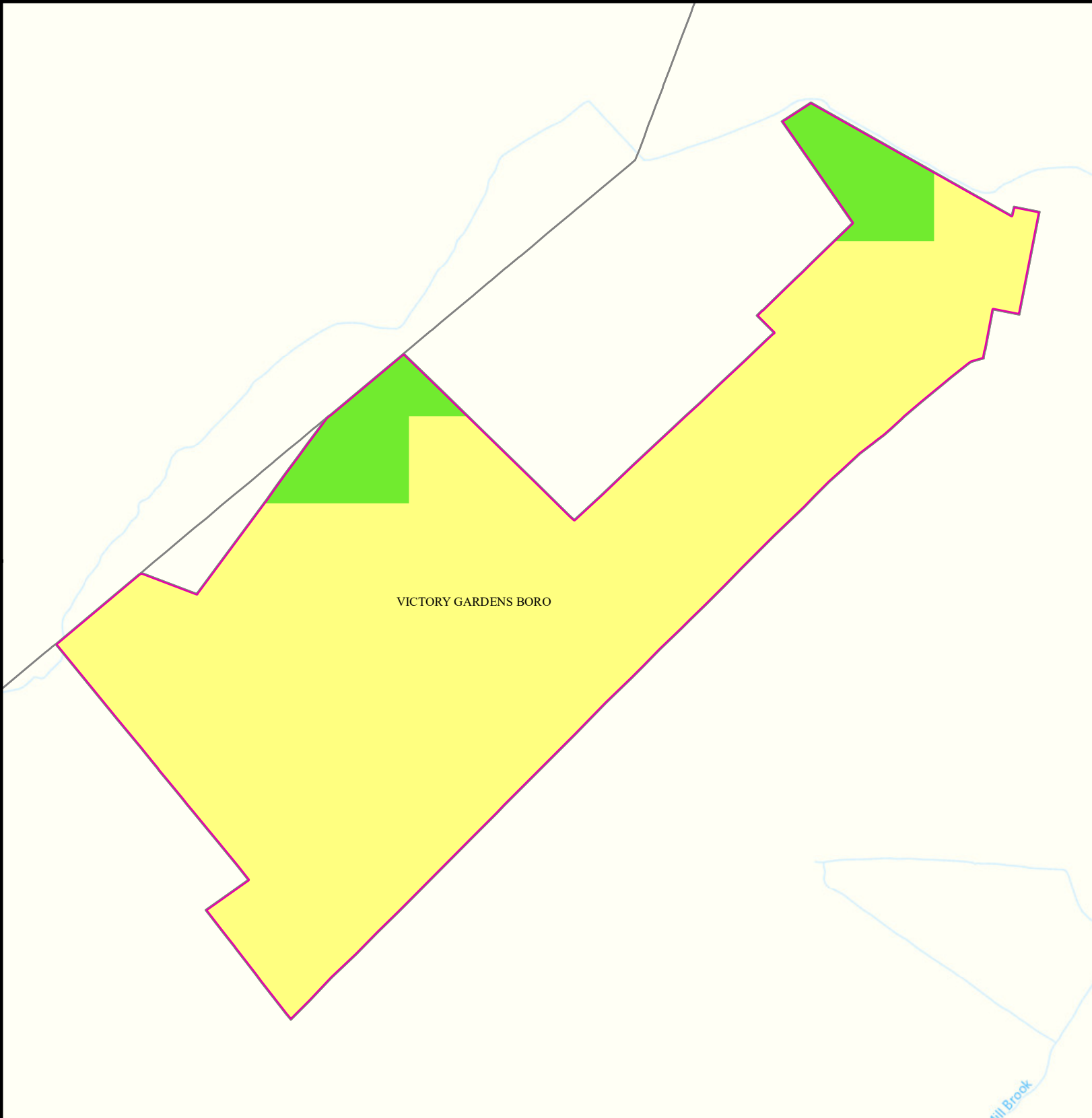


Date: 4/19/2022

0 0.0375 0.075



Miles



# Open Space

VICTORY GARDENS BORO

MORRIS

## Legend

-  Counties
-  VICTORY GARDENS BORO
-  Open Space
-  Residential Population > 1/4 Mile from Open Space

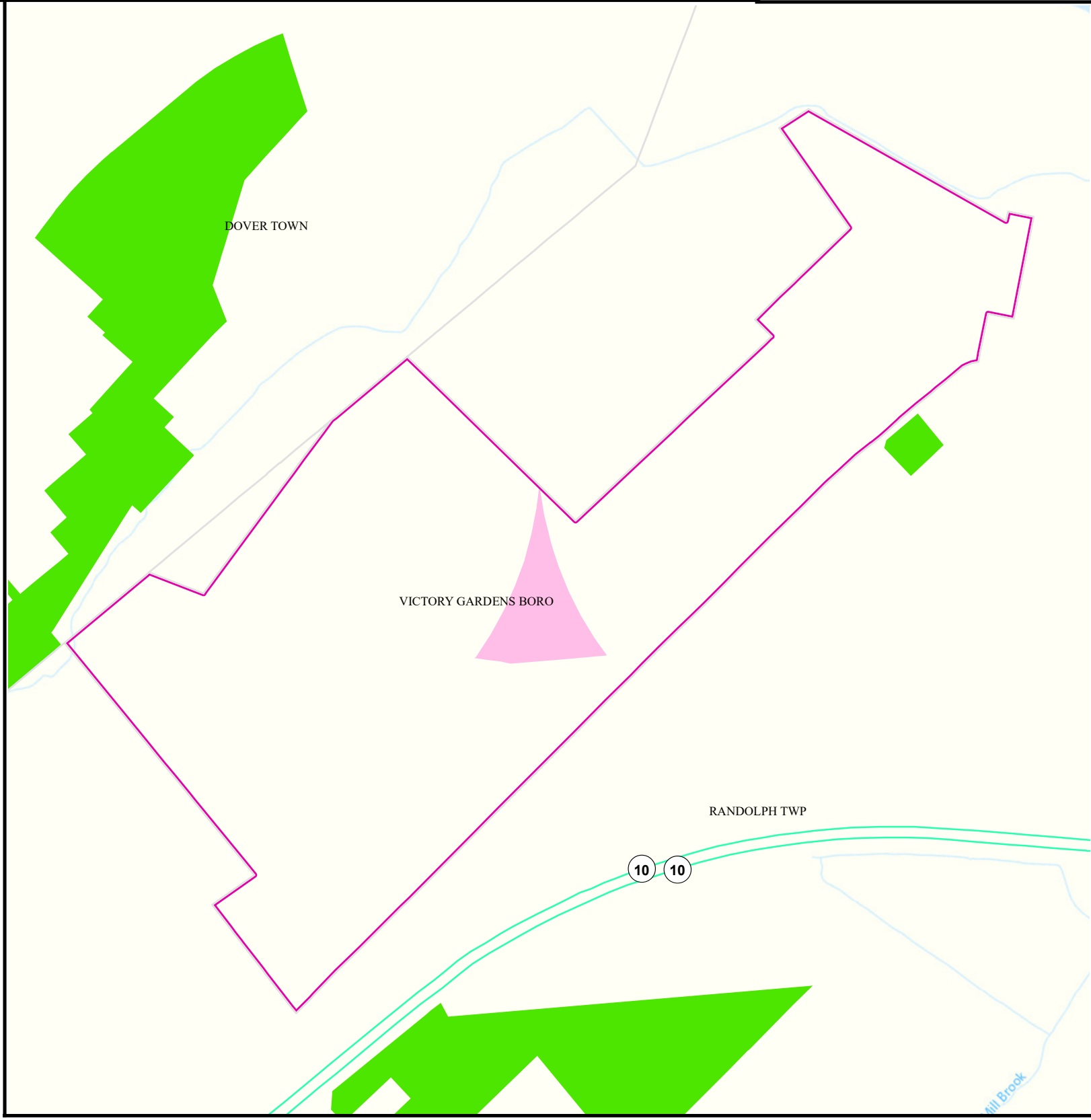


Date: 9/27/2022

0 0.04 0.08



Miles



# Traffic

**VICTORY GARDENS BORO**

**MORRIS**

## Legend

- Counties
- VICTORY GARDENS BORO
- 1000 ft. Road Buffer

- Daily Traffic Volume**
- 25,000 - 50,000
  - 50,001 - 75,000
  - 75,001 - 100,000
  - 100,001 - 125,000
  - 125,000+

Receptors	Count
Childcare	0
School	0
Population	407

N

Date: 4/19/2022

0 0.0425 0.085

Miles





# Low Birth Weight





## Victory Gardens Boro

## Morris

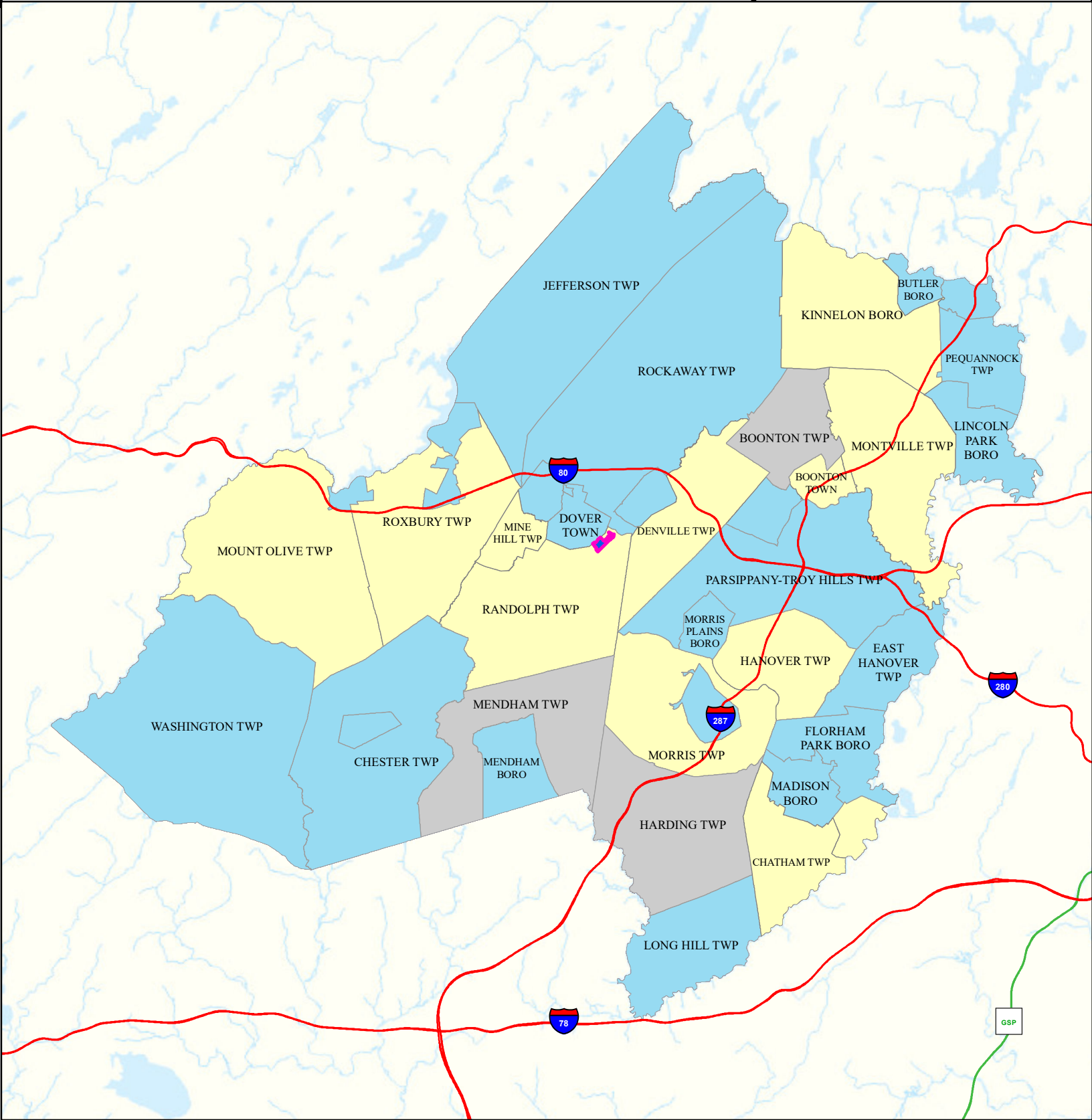
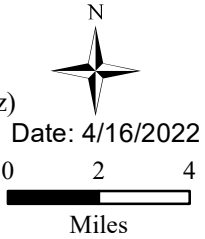
### Legend

-  Municipalities
-  Victory Gardens Boro

### State Comparison

-  Above
-  No Difference
-  Below
-  Suppressed

Birth Rate  
Low Birth Weight  
(% All Births < 5 lb, 8 oz)  
2016 to 2020



# Age of Housing

VICTORY GARDENS BORO

MORRIS

## Legend

Counties

Municipalities

VICTORY GARDENS BORO

### Year House Constructed

Pre 1950

Between 1951 and 1978

After 1978

Unknown



Date: 4/13/2022

0 0.0375 0.075



Miles

DOVER TOWN

RANDOLPH TWP

VICTORY GARDENS BORO

RANDOLPH TWP

10

Brook



# Asthma (Emergency Department)

Victory Gardens Boro

Morris

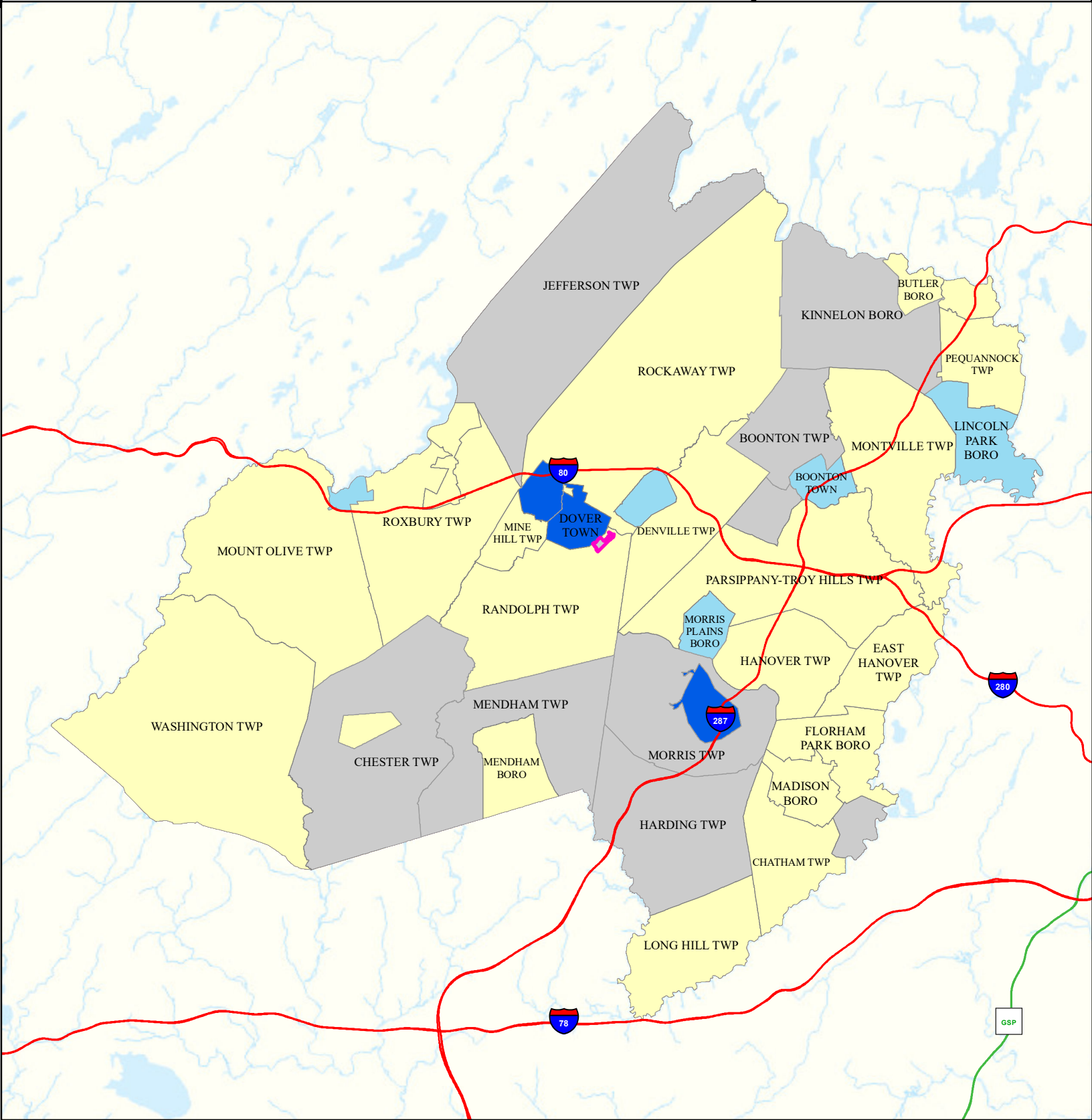
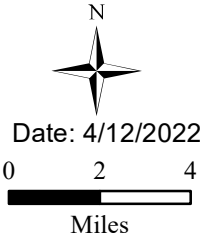
## Legend

- Municipalities
- Victory Gardens Boro

## State Comparison

- Above
- Below
- No Difference
- Suppressed

Age-adjusted Rate per 10,000 People 2016 to 2019  
Emergency Department Visits for Asthma





# Heart Attack (AMI) (Inpatient)




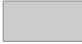
Victory Gardens Boro

Morris

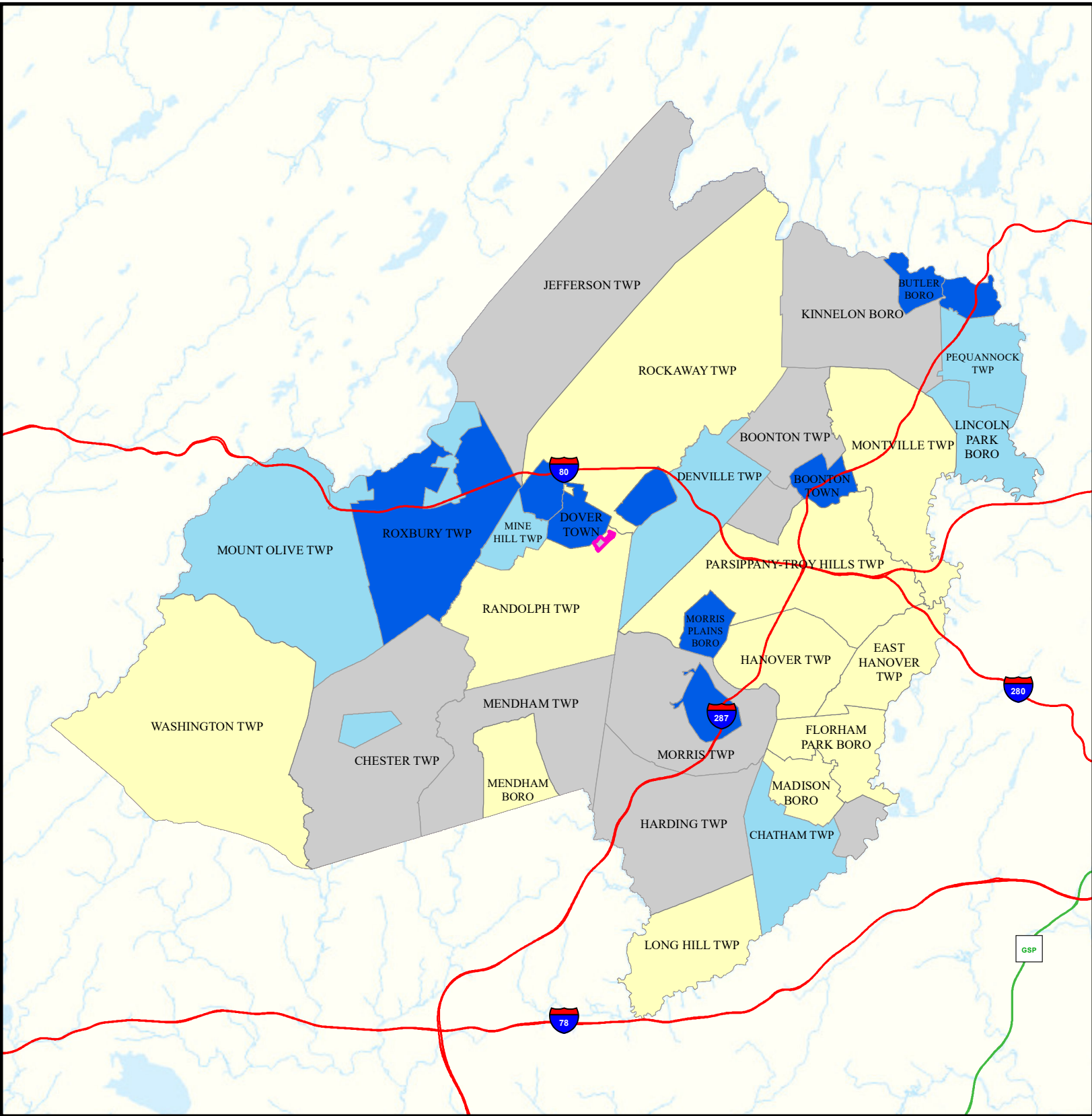
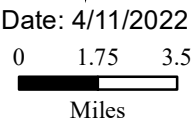
## Legend

-  Municipalities
-  Victory Gardens Boro

## State Comparison

-  Above
-  No Difference
-  Below
-  Suppressed

Age-adjusted Rate  
per 10,000 People  
2016 to 2019  
Inpatient Visits for AMI  
(Acute Myocardial Infarction)



# Heart Disease Deaths

## Victory Gardens Boro

## Morris

### Legend

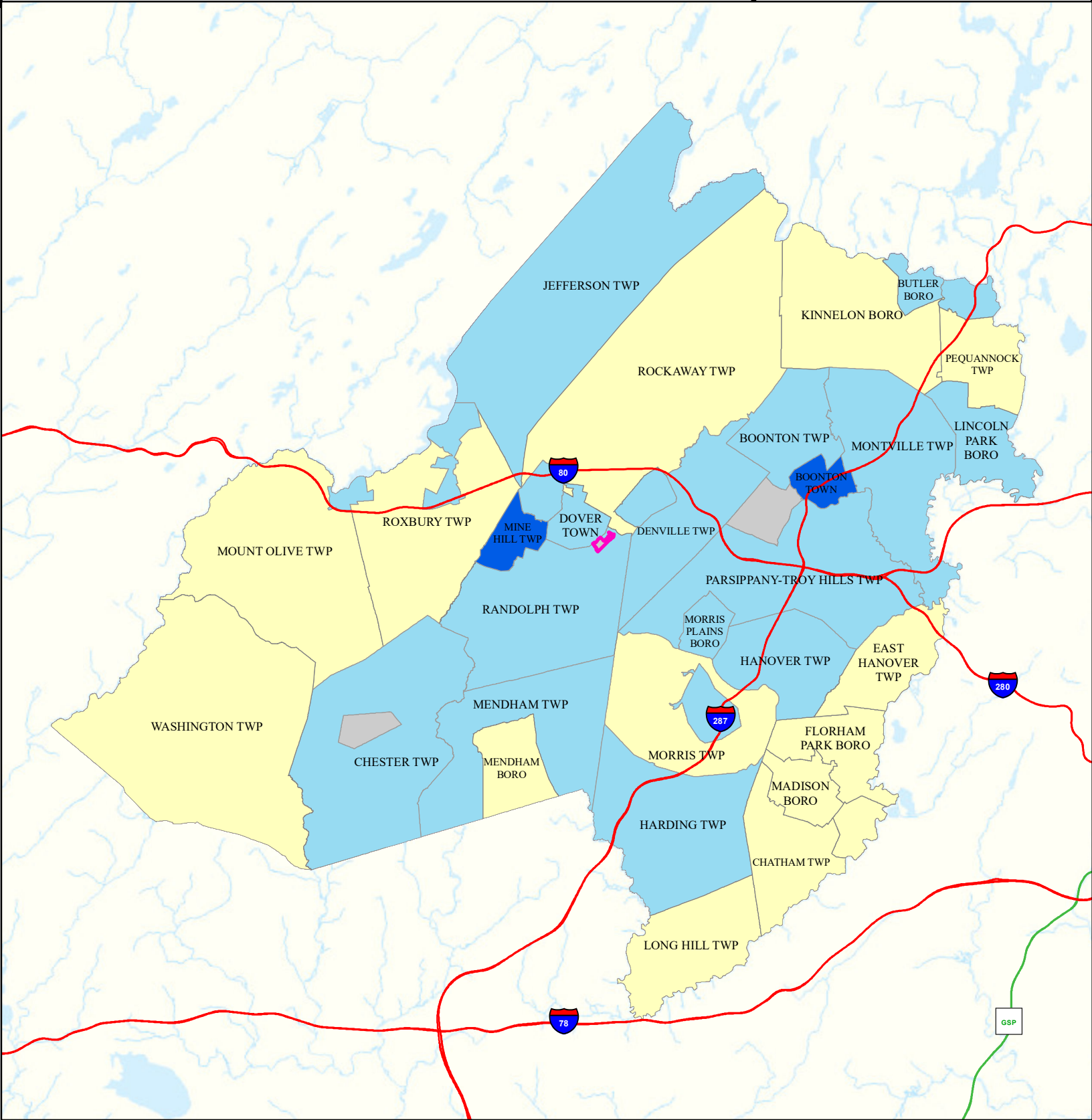
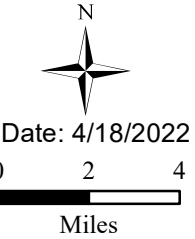
- Municipalities
- Victory Gardens Boro

### State Comparison

- Above
- Below
- No Difference
- Suppressed

Age-adjusted Death Rate  
per 100,000 People  
2015 to 2019

Deaths for Heart Disease



# COPD (Emergency Department)

## Victory Gardens Boro

## Morris

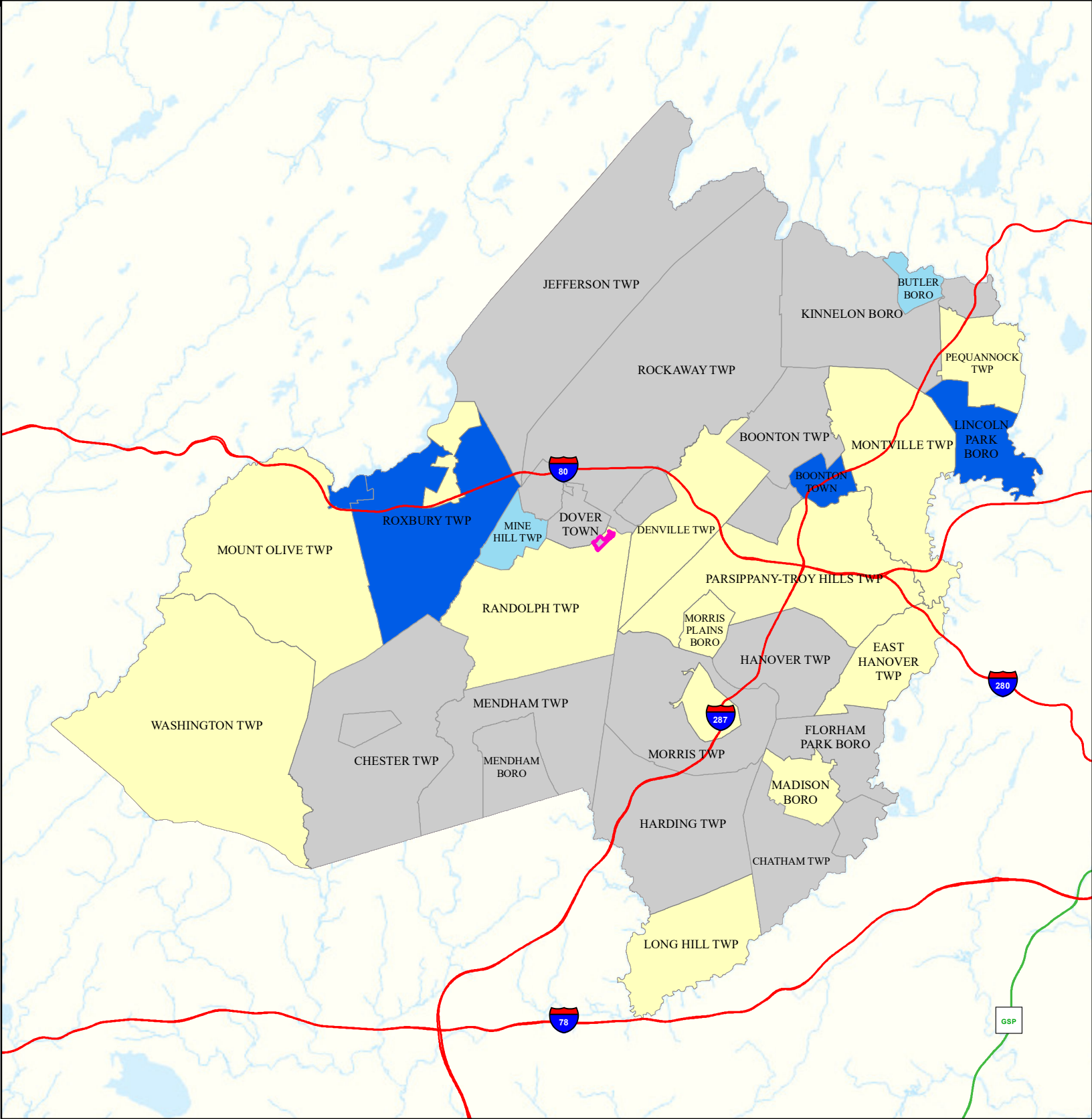
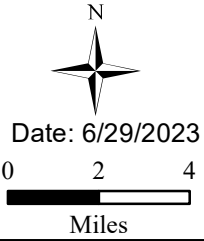
### Legend

- Municipalities
- Victory Gardens Boro

### State Comparison

- Above
- Below
- No Difference
- Suppressed

Age-adjusted Rate  
per 10,000 People  
2016 to 2019  
Emergency Department  
Visits for COPD





# Stroke (Inpatient)





## Victory Gardens Boro

## Morris

### Legend

-  Municipalities
-  Victory Gardens Boro

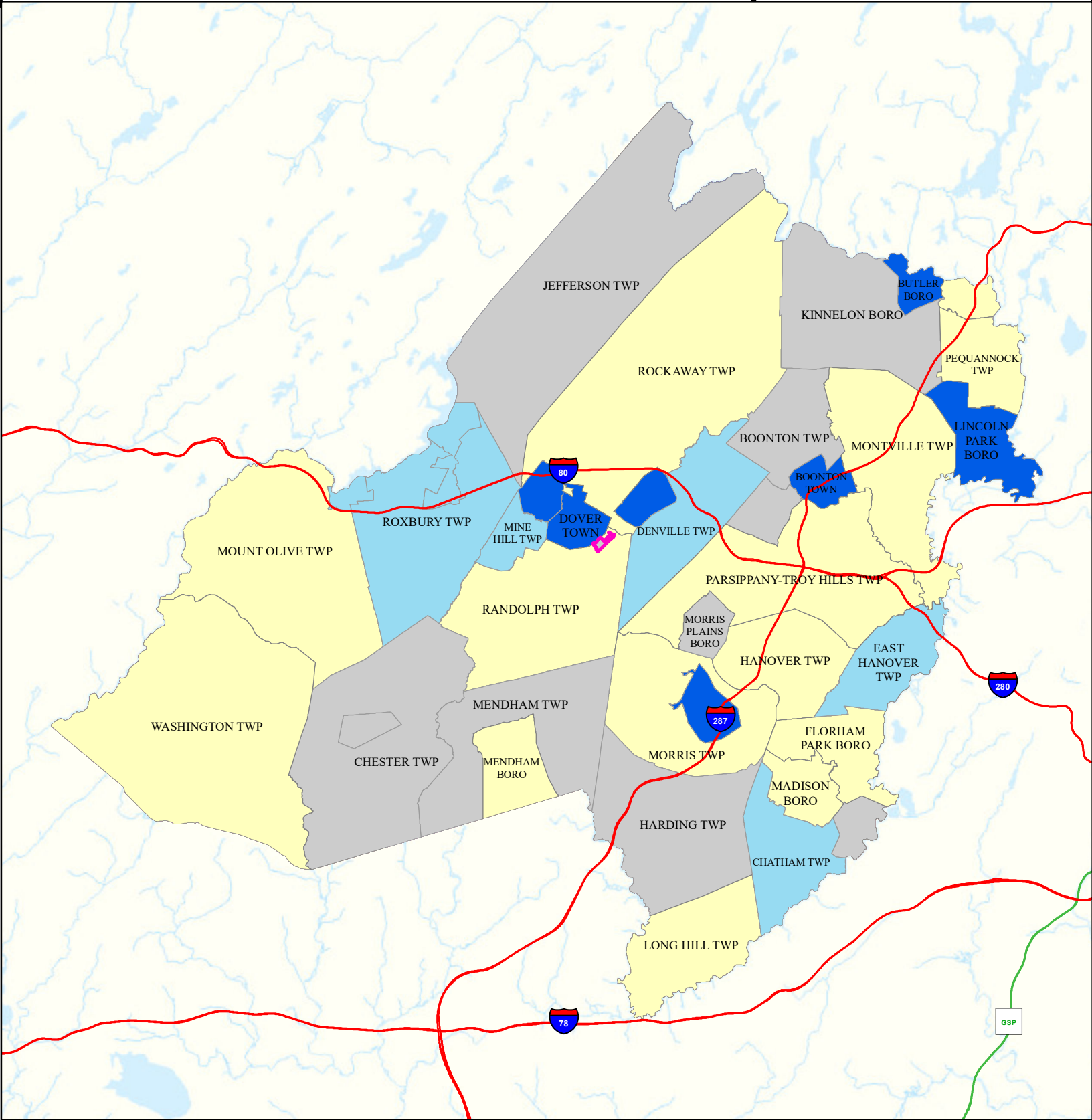
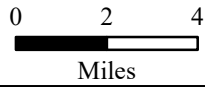
### State Comparison

-  Above
-  No Difference
-  Below
-  Suppressed

Age-adjusted Rate  
per 10,000 People  
2016 to 2019  
Inpatient Visits  
for Stroke



Date: 4/15/2022



# All Cancer Deaths

## Victory Gardens Boro

## Morris

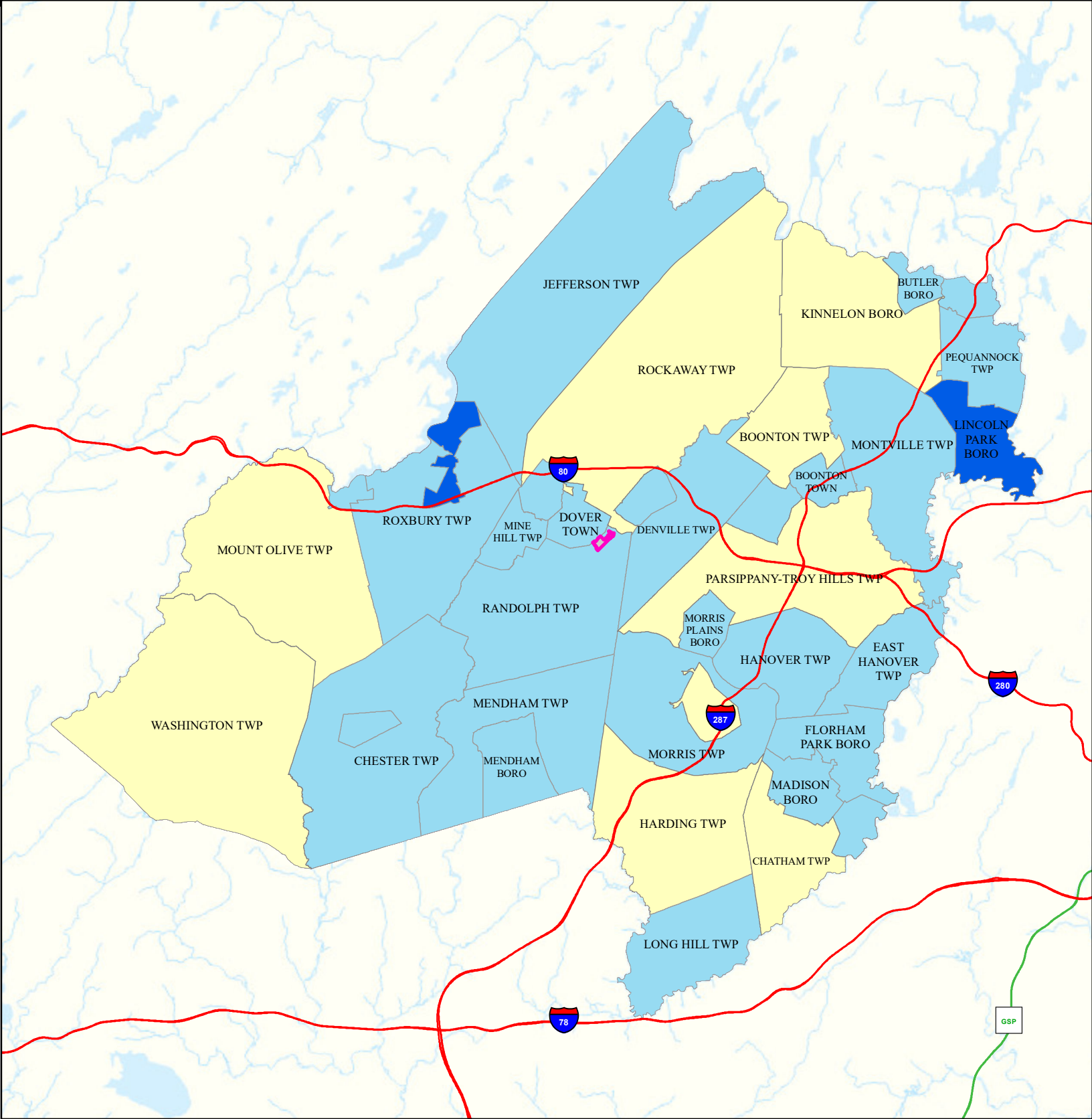
### Legend

- Municipalities
- Victory Gardens Boro

### State Comparison

- Above
- Below
- No Difference
- Suppressed

Age-adjusted Death Rate  
per 100,000 People  
2015 to 2019  
Deaths for Cancer



# Lung Cancer Deaths

## Victory Gardens Boro

## Morris

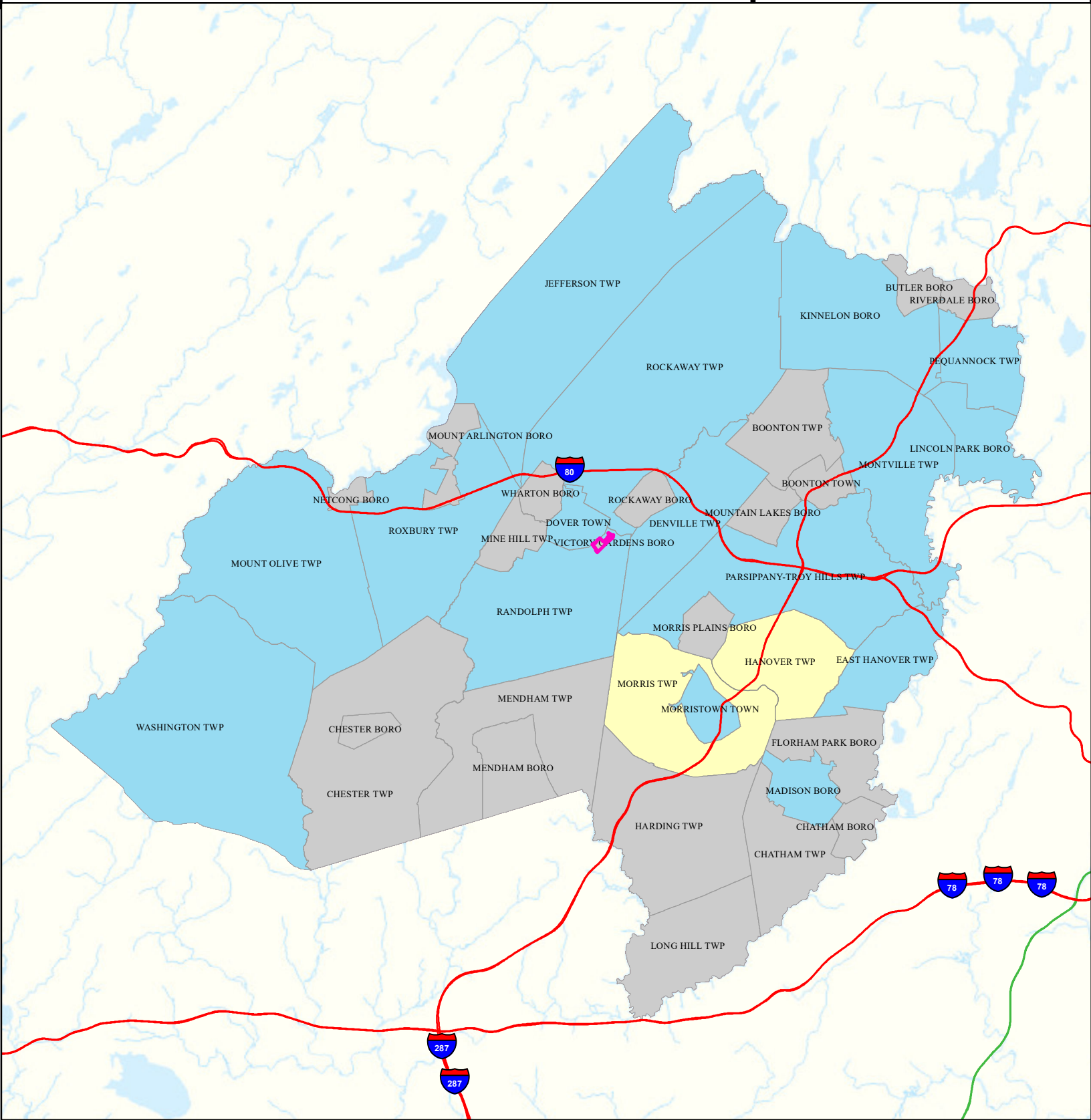
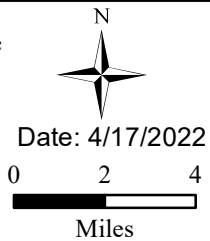
### Legend

- Municipalities
- Victory Gardens Boro

### State Comparison

- Above
- No Difference
- Below
- Suppressed

Age-adjusted Death Rate  
per 100,000 People  
2015 to 2019  
Deaths for Lung Cancer



# Smoking

## Victory Gardens Boro

## Morris

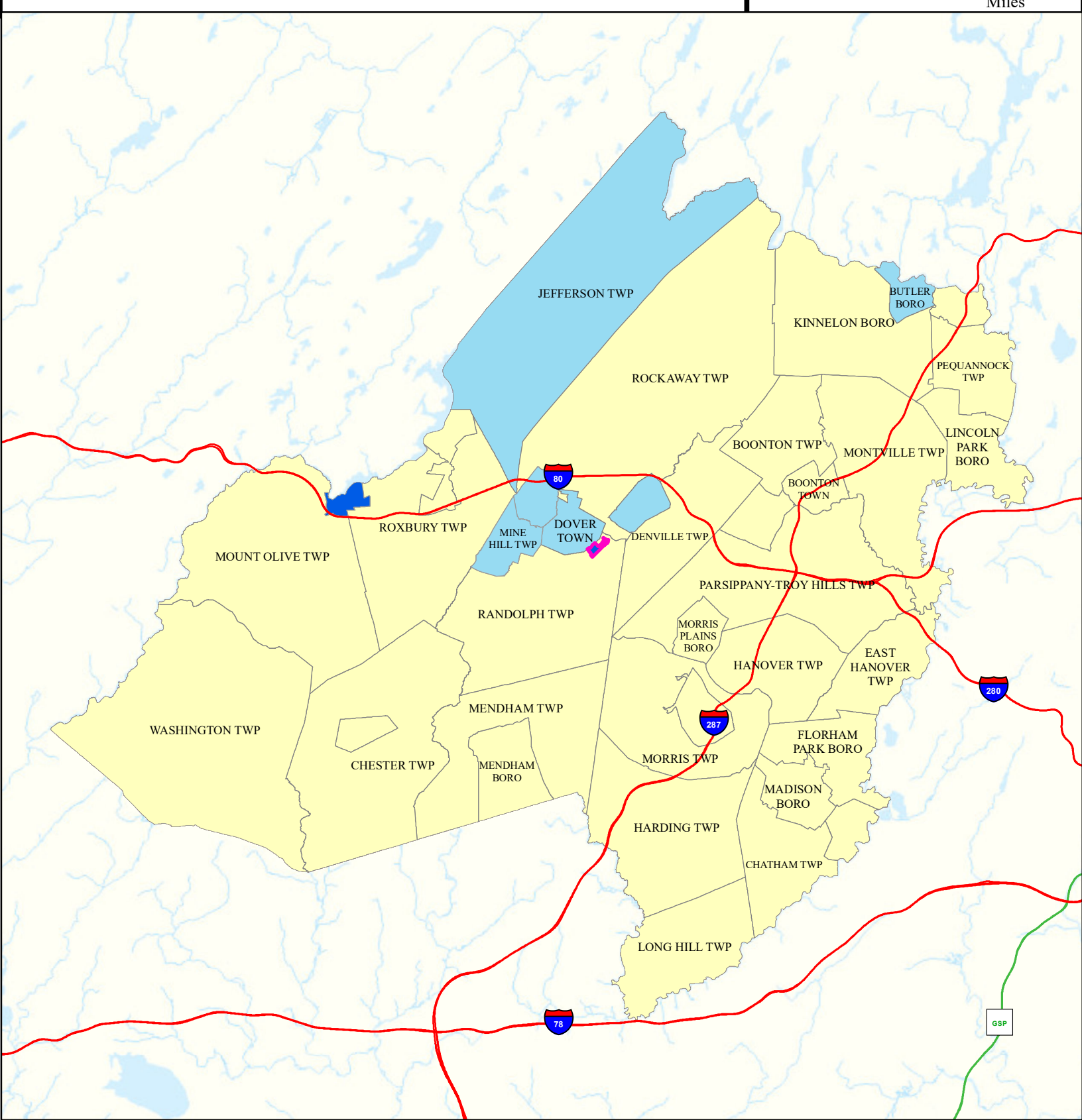
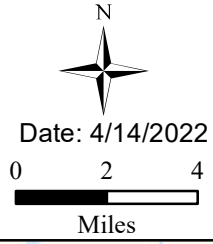
### Legend

- Municipalities
- Victory Gardens Boro

### State Comparison

- Above
- Below
- No Difference
- Suppressed

Smoking Rate  
Per Municipal  
% of Adults  
2018





# Obesity

## Victory Gardens Boro

## Morris

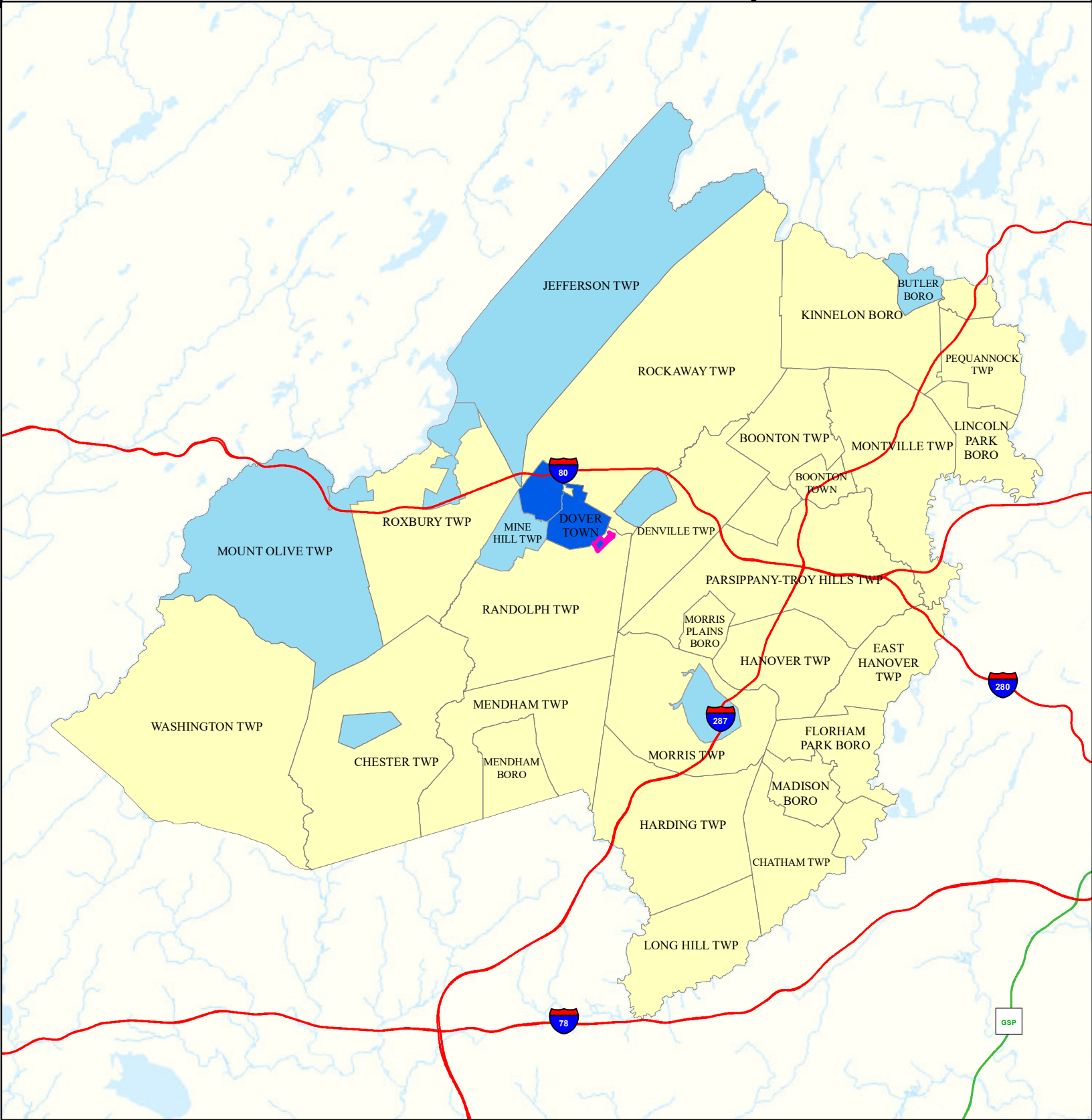
### Legend

- Municipalities
- Victory Gardens Boro

### State Comparison

- Above
- No Difference
- Below
- Suppressed

Obesity Rate  
Per Municipal  
% of Adults  
2018





# Heat Related Illness (Emergency Department)

## Victory Gardens Boro

## Morris

### Legend

-  Municipalities
-  Victory Gardens Boro

### State Comparison

-  Above
-  Below
-  No Difference
-  Suppressed

Age-adjusted Rate  
per 10,000 People  
2016 to 2019  
Emergency Department  
Visits for  
Heat Related Illness

